
From: Samuel Smith [REDACTED]
Sent: Thursday, September 16, 2021 1:59 PM
To: House & Governmental Affairs
Subject: 2020 Redistricting Proposal

Hello,

I understand there's a public meeting in the State Senate tomorrow concerning reapportionment of our congressional districts. While I will unfortunately not be able to attend, I have put together a proposal for the committee's consideration if they're interested. Ensuring fair districts for our state's citizens is important to me, and I hope this proposal will help somewhat in that endeavor. Thank you all in advance and have a great weekend!

[Redistricting Proposal \(Louisiana Congressional Map\) - Google Docs](#)

-Samuel
Denham Springs, LA

Hello, I'm a resident of Denham Springs and a lifelong resident of Louisiana's 6th Congressional District. I thank the committee for taking the time to read over my proposal for our state's congressional map. These maps determine congressional representation for the over 4 million people who call Louisiana home until the 2032 elections, so any proposal for our state's congressional boundaries require a great deal of careful thought to ensure the best representation of our state's citizens for the next decade.

Our current map is in massive need of change, as the current boundaries for multiple congressional districts, including mine, are discriminatory, and possibly unconstitutional in their current forms. The map I'm proposing is put together with communities of interest in mind, avoiding unnecessary parish and community splits where possible, and ensuring that minority residents of our state have the chance to elect representatives of their choice, without the current fracturing of communities that are prevalent in our current districts.

Louisiana's 1st Congressional District

Incumbent: Steve Scalise (R)

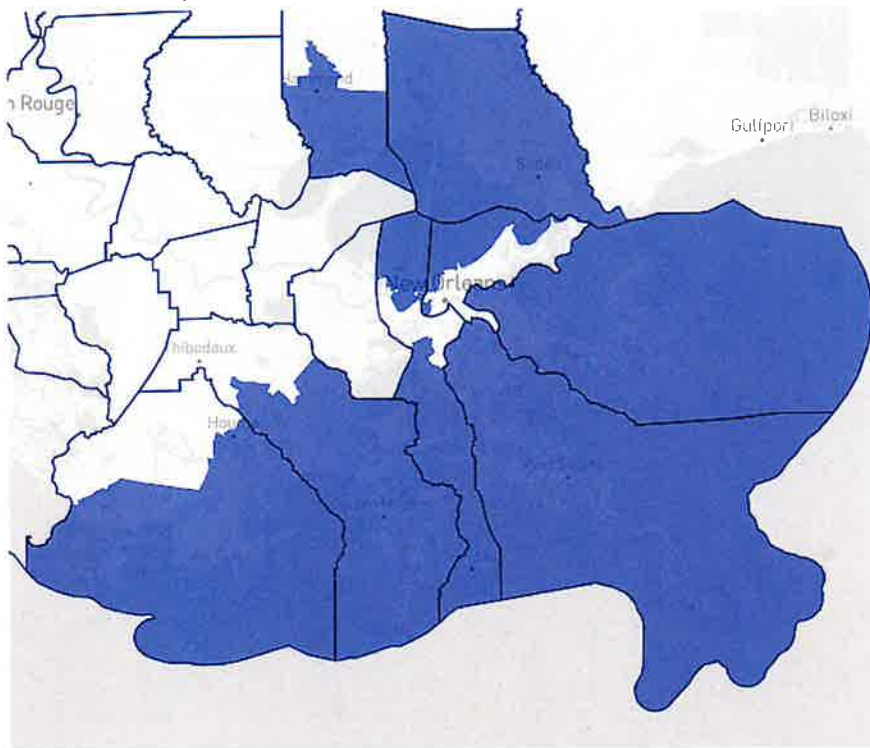
2020 Cook PVI (old district): R+22

2020 Cook PVI (new district): R+25

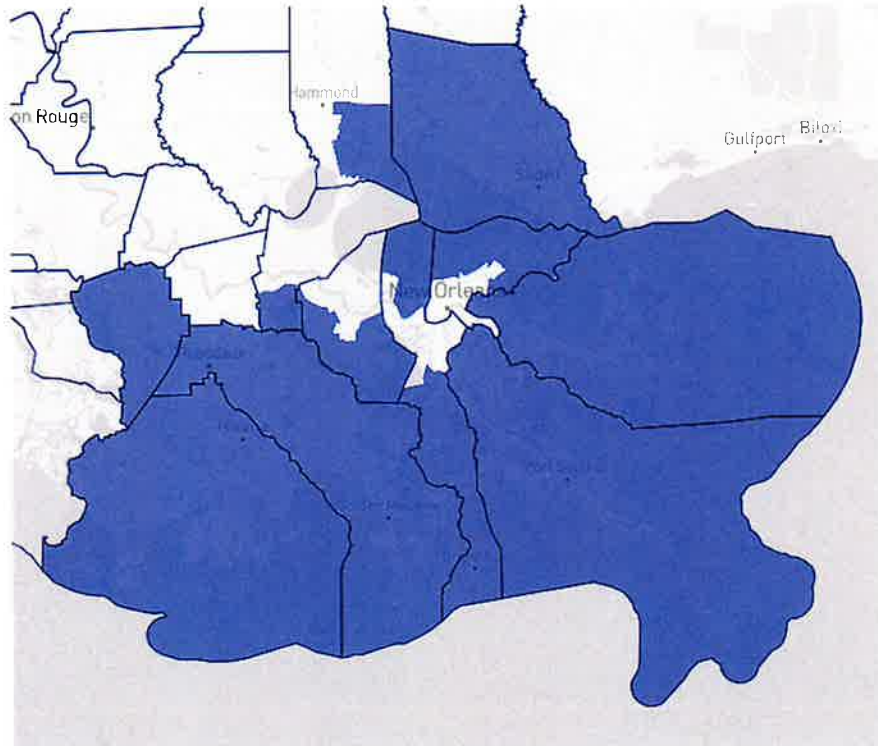
LA-1 would see some minor changes on the new map. Due to a population growth of 35,000 residents relative to the average district in our state, LA-1 shrinks a bit in this proposal to rebalance the population with the remaining districts, ceding some suburban New Orleans territory to the 2nd district as well as shedding most of its share of Tangipahoa Parish (including most of Hammond) to the 6th district, leaving only a small portion of Tangipahoa east of Hammond. In return, the 1st picks up the remaining portions of Terrebonne and Lafourche parishes, all of Assumption Parish and small portions of St. Charles and St. John the Baptist parishes.

Furthermore, this district's lines are a bit cleaner from removing the portion of the district that stretches into New Orleans itself near the neighborhoods of Black Pearl and Lakeview, giving those to the 2nd district. It does take in a small portion of far Eastern New Orleans near Lake Catherine. The political character of the district barely changes, as the new 1st district is slightly more Republican-leaning than its predecessor. Incumbent Steve Scalise would win this district easily,

OLD LA-1 Map:



NEW LA-1 Proposal



Louisiana's 2nd Congressional District

Incumbent: Troy Carter (D)

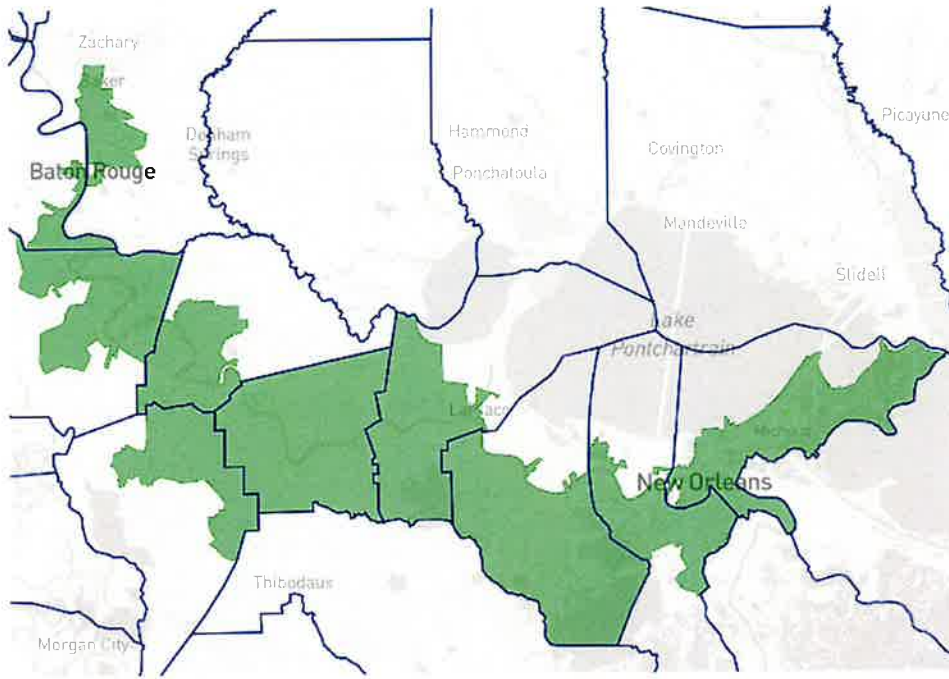
2020 Cook PVI (old district): D+25

2020 Cook PVI (new district): D+18

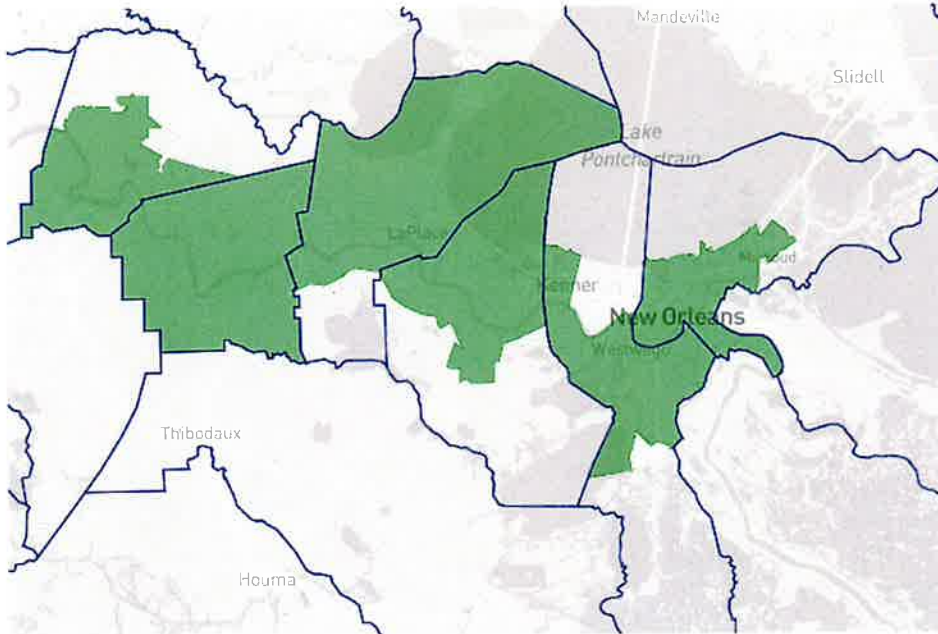
LA-2 remains the New Orleans based district in this new proposal, taking in nearly all of New Orleans itself and the majority of its suburbs, including Gretna, Timberlane, Harvey, Marrero, Kenner and Terrytown. In addition, it stretches westward, taking in all or portions of St. Charles, St. John the Baptist, St. James, and the cities of Gonzales and Donaldsonville in Ascension Parish. One of the worst parts of the old 2nd was the fracturing of the state capital city of Baton Rouge to pack African American voters into the 2nd district to make the 6th district safer.

This map fixes that by keeping the River Parishes together, as well as keeping nearly the entire city of New Orleans together and served by a single representative. Because of the removal of north Baton Rouge and the addition of more purple suburbs in the immediate vicinity of New Orleans, this district is about 7 points more Republican than the previous iteration. However, it is still safely Democratic and majority-minority, ensuring that minority voters throughout the River Parishes and the greater New Orleans metro will maintain their voting power without fracturing the capital city of Baton Rouge. It's a much more compact alternative that keeps communities of interest together in the Greater New Orleans metropolitan area far better than the previous 2nd district.

OLD LA-2 MAP



NEW LA-2 MAP



Louisiana's 3rd Congressional District:

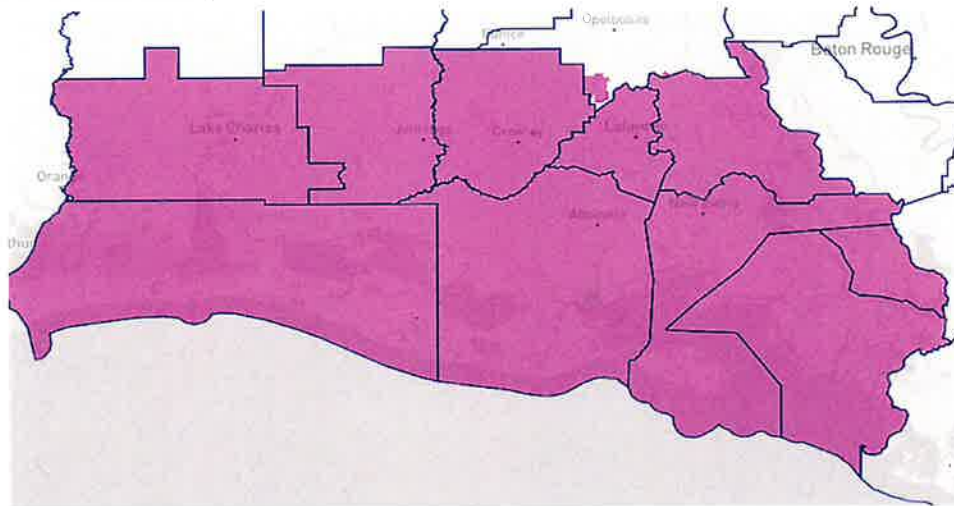
Incumbent: Clay Higgins (R)

2020 Cook PVI (old district): R+21

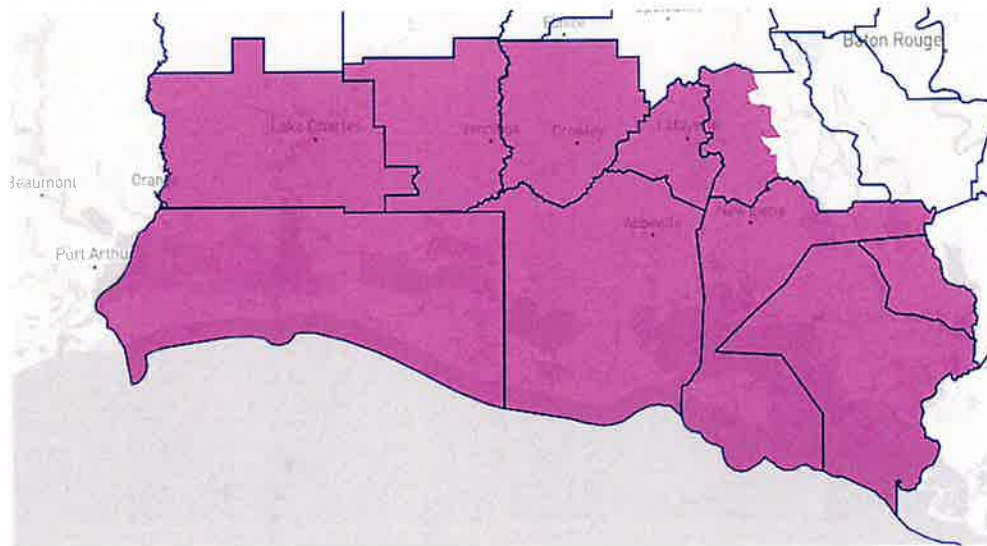
2020 Cook PVI (new district): R+21

The 3rd district is, in my opinion, easily the best drawn and most normally drawn district in the state, so the only changes really come from rebalancing the population to account for the growth relative to the average district of about 9,000 residents. The only two adjustments are the removal of the sliver of St. Landry Parish currently within the 3rd district near Cankton, and the removal of the less populated eastern portion of St. Martin Parish. Everything else transfers over from the current 3rd to the new proposal for the 3rd district.

OLD LA-3 MAP:



NEW LA-3 MAP



Louisiana's 4th Congressional District

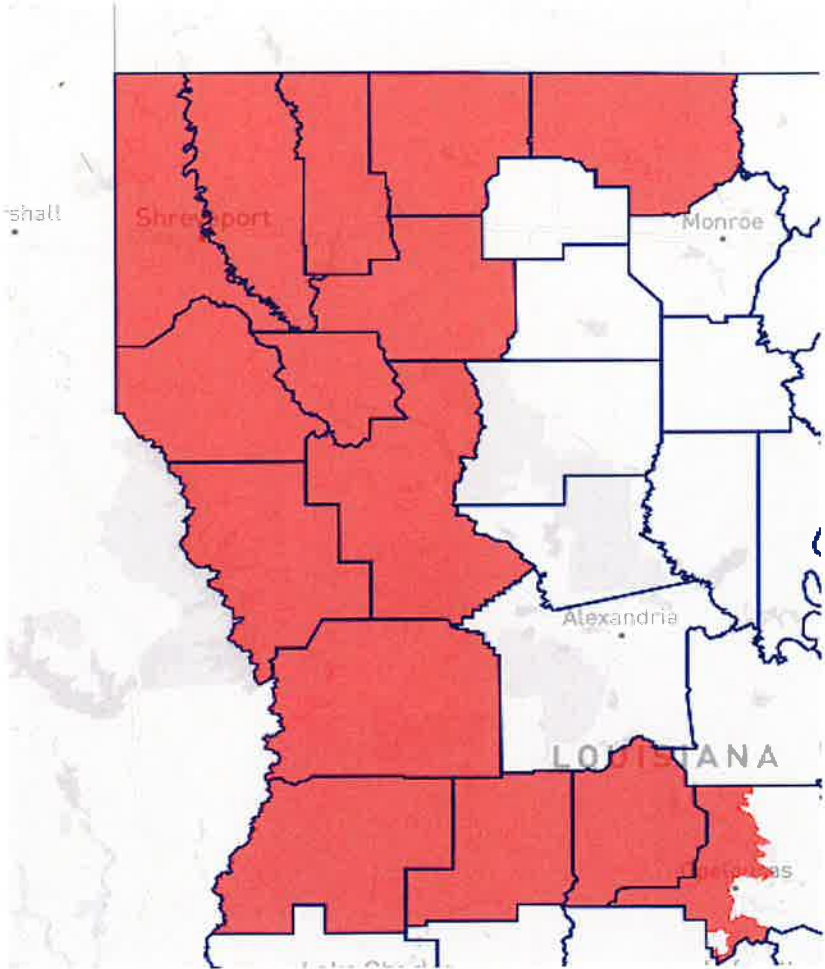
Incumbent: Mike Johnson (R)

2020 Cook PVI (old district): R+14

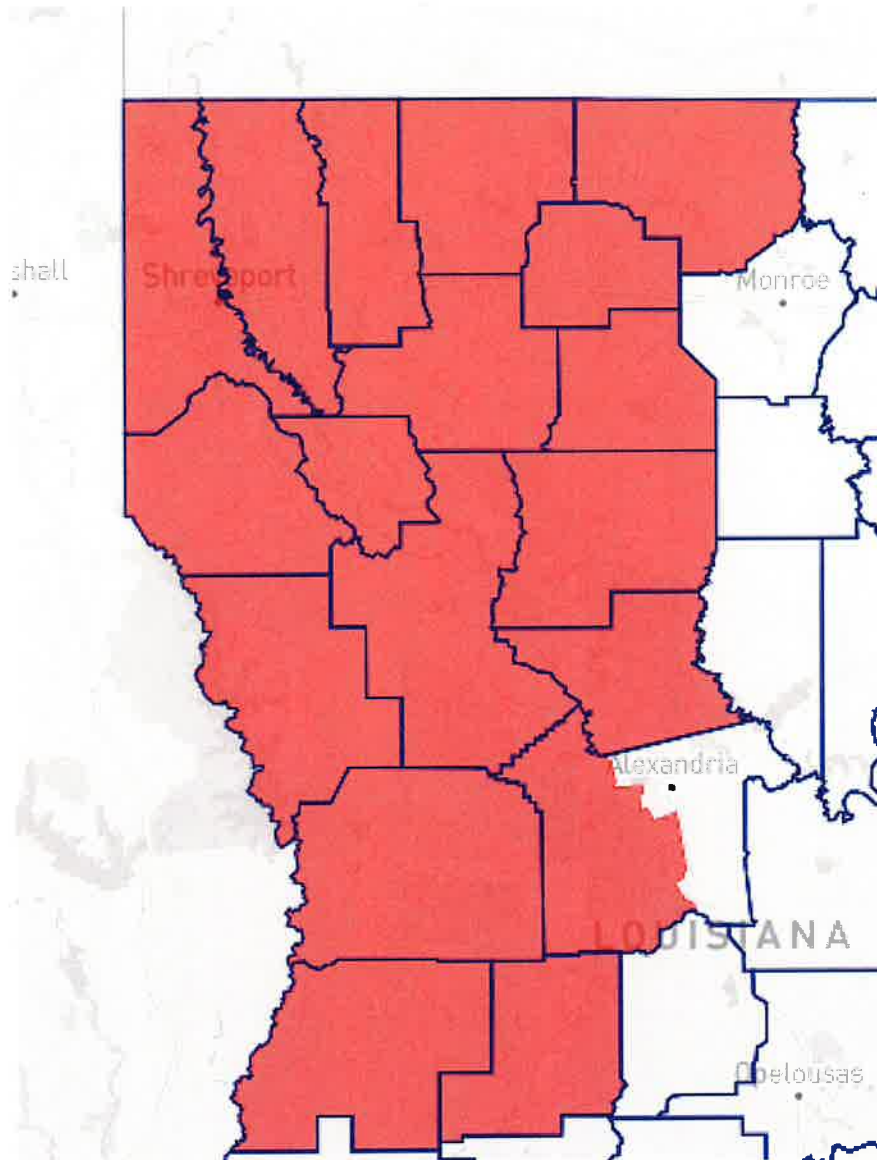
2020 Cook PVI (new district): R+16

With a population loss of nearly 50,000 residents relative to the average district, largest of any of the 6 districts, the 4th district exchanges Evangeline and its portion of St. Landry parish, and in return picks up Grant, Winn, Jackson, and Lincoln parishes, as well as the western, less populated half of Rapides parish from the 5th district. This in turn, makes the district more compact, and now encompasses the western half of North Louisiana. The district itself is about 2 points more Republican than its previous iteration due to the replacement of more Democratic leaning precincts in St. Landry being replaced by the more conservative north Louisiana parishes mentioned above. This district is more compact than the previous version while still maintaining the district's base in Shreveport-Bossier City.

OLD LA-4 MAP



NEW LA-4 MAP



Louisiana's 6th Congressional District

Incumbent: Garret Graves (R)

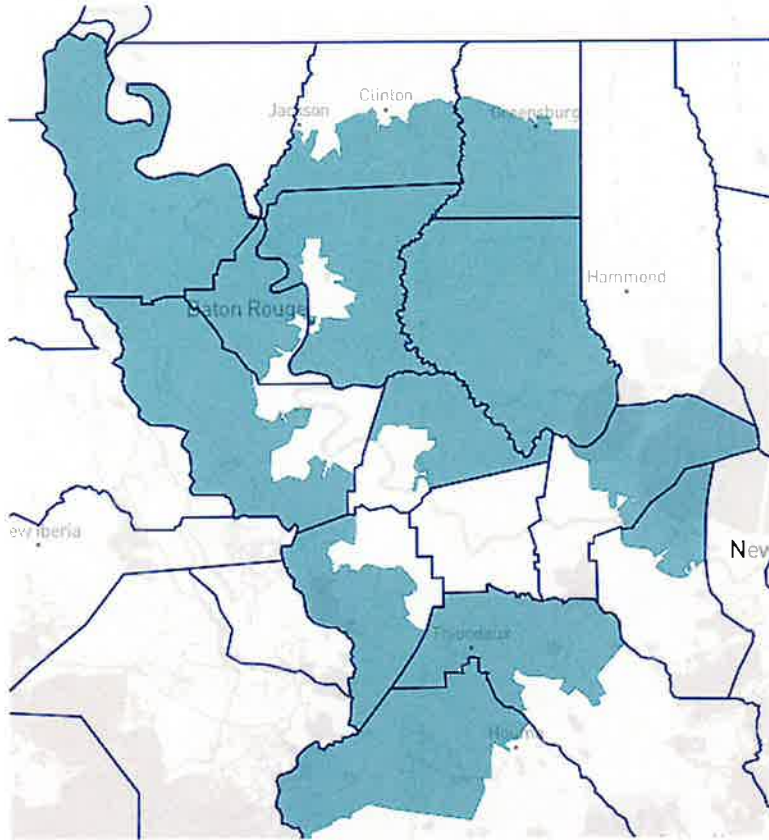
2020 Cook PVI (old district): R+18

2020 Cook PVI (new district): R+9

This district is my home district, and it's the one that undergoes the largest change in this map. It was the fastest growing district relative to the rest of the state, gaining nearly 40,000 residents relative to the average district, meaning it would have to shrink to balance the population with the other 5 districts. The new 6th is far more compact and coterminous with the Baton Rouge metropolitan area, taking in all of East Baton Rouge, West Baton Rouge, Livingston, and portions of Tangipahoa parishes along the I-12 corridor, and northern and eastern Ascension Parish. The new district sheds all of its share of the coastal and river parishes to the 1st and 2nd districts, and keeps the 6th a Baton Rouge-area district.

Due to retaking north Baton Rouge from the 2nd district, this district is 9 points more Democratic than the previous iteration, making it the most competitive district in the state. It now takes in the entire I-10/I-12 corridor, and picks up Ponchatoula and Hammond, home of Congressman James Morrison (the longest serving Congressman in district history). This district is designed to ensure that the Baton Rouge area has their own representative solely focused on the everyday needs of the district, such as drainage, funding for potential infrastructure projects such as a potential new Mississippi Bridge or interstate improvements. This district does just that, and ensures that the Capital Region has a unified voice in the halls of Congress.

LA-6 OLD MAP:



LA-6 NEW MAP:

